

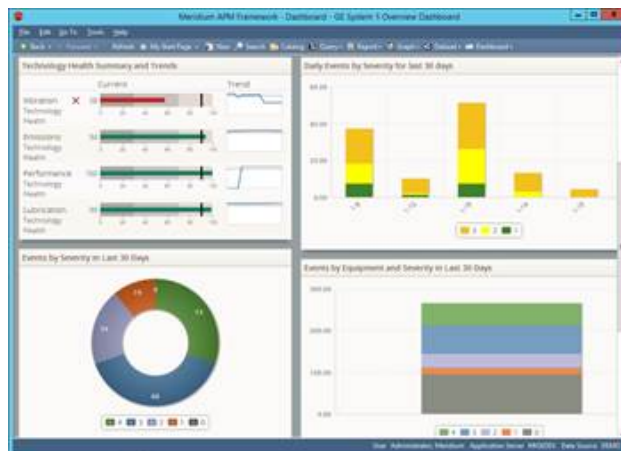
Orbit Magazine

Production Asset Reliability is Now Available

Date : March 16, 2015

[Production Asset Reliability \(PAR\)](#), our integrated product offering with Meridium Inc., is now available.

PAR is the integration of GE's System 1* condition monitoring and diagnostic applications, with Meridium's suite of enterprise performance management software. The solution is designed to help customers in the oil and gas, power generation, and other asset intensive industries optimize production.



With PAR, the data in System 1 is connected with Meridium's suite of enterprise management applications to offer a holistic view in which customers can diagnose emerging failures; assess and mitigate risk; and measure, report, and aggregate results into a single dashboard of reliability metrics.

Benefits:

Connected Analytics

Orbit Magazine

- Companies can quantify the value of asset condition monitoring and connect it across the entire enterprise so that patterns are correlated, risks assessed and operations are optimized

Greater Reliability

- Track and monitor downtime and product loss to better leverage KPI's in order to create and manage reliability strategies

Risk Mitigation

- By measuring, monitoring and managing, PAR helps operators understand the likelihood and consequence of asset failure

Optimized Efficiencies

- Connect existing work management and asset performance systems to generate and track work identification, execution, and impact to business objectives

Check out the PAR video [here](#)!

Copyright 2015 Baker Hughes, a GE company, LLC ("BHGE") All rights reserved.

Bently Nevada, Orbit Logo, ADRE, Keyphasor, Promimitor, Velomitor and System 1 are registered trademarks of BHGE in the United States and other countries. All product and company names are trademarks of their respective holders. Use of the trademarks does not imply any affiliation with or endorsement by the respective holders.

The information contained in this document is subject to change without prior notice.

1631 Bently Parkway South, Minden, Nevada USA 89423

Phone: 1.775.782.3611 Bently.com

**BAKER
HUGHES**
a GE company

